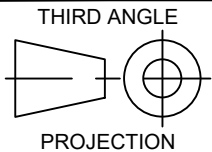


**NOTES:**

1. CMSSI KIT NUMBER: GICAMGSA.
2. ITEMS 2, 3 AND 4 ARE PART OF CMSSI KIT GICAMGS.

| 7           |    |    |    |    | 10 | -                | FLAT HEAD SOCKET CAP SCREW Ø3/8"-16 UNC x 1.000" LG | STEEL BLACK OXIDE | CSFS006024        |
|-------------|----|----|----|----|----|------------------|---|-------------------|-------------------|
| 6           |    |    |    |    | 4  | -                | FLAT HEAD SOCKET CAP SCREW Ø1/4"-20 UNC x 0.750" LG | STEEL BLACK OXIDE | CSFS004012        |
| 5           |    |    |    |    | 4  | -                | BUTTON HEAD CAP SCREW Ø1/4"-20 UNC x 0.750" LG      | STEEL BLACK OXIDE | CSBH004012        |
| 4           |    |    |    |    | 1  | GICA0014         | SPLICE CORNER BRKT                                  | ALUM 6061-T6      | GICAMGS           |
| 3           |    |    |    |    | 1  | GICA0013         | SPLICE BAR  | ALUM 6061-T6      | GICAMGS           |
| 2           |    |    |    |    | 1  | GICA0012         | SPLICE PLATE  | ALUM 6061-T6      | GICAMGS           |
| 1           |    |    |    |    | -  | GICA-SPLICE-0001 | GATE FRAME SEGMENT SPLICE                           | -                 | -                 |
| ITEM NUMBER | T5 | T4 | T3 | T2 | T1 | DRAWING NUMBER   | DESCRIPTION   | MATERIAL          | CMSSI PART NUMBER |

**LIST OF MATERIAL**



TITLE:  
**GATE FRAME SEGMENT SPLICE**

DRAWN BY:  
**P.SCARFO**

INT

CHECKED BY:  
**A.LOCKE**

INT

APPROVED BY:  
**B.SYLVESTER**

INT

DATE:  
**12/FEB/16**

NEXT ASSEMBLY:  
**GICA-INSTL-0001**

SCALE:  
**1"=16"**

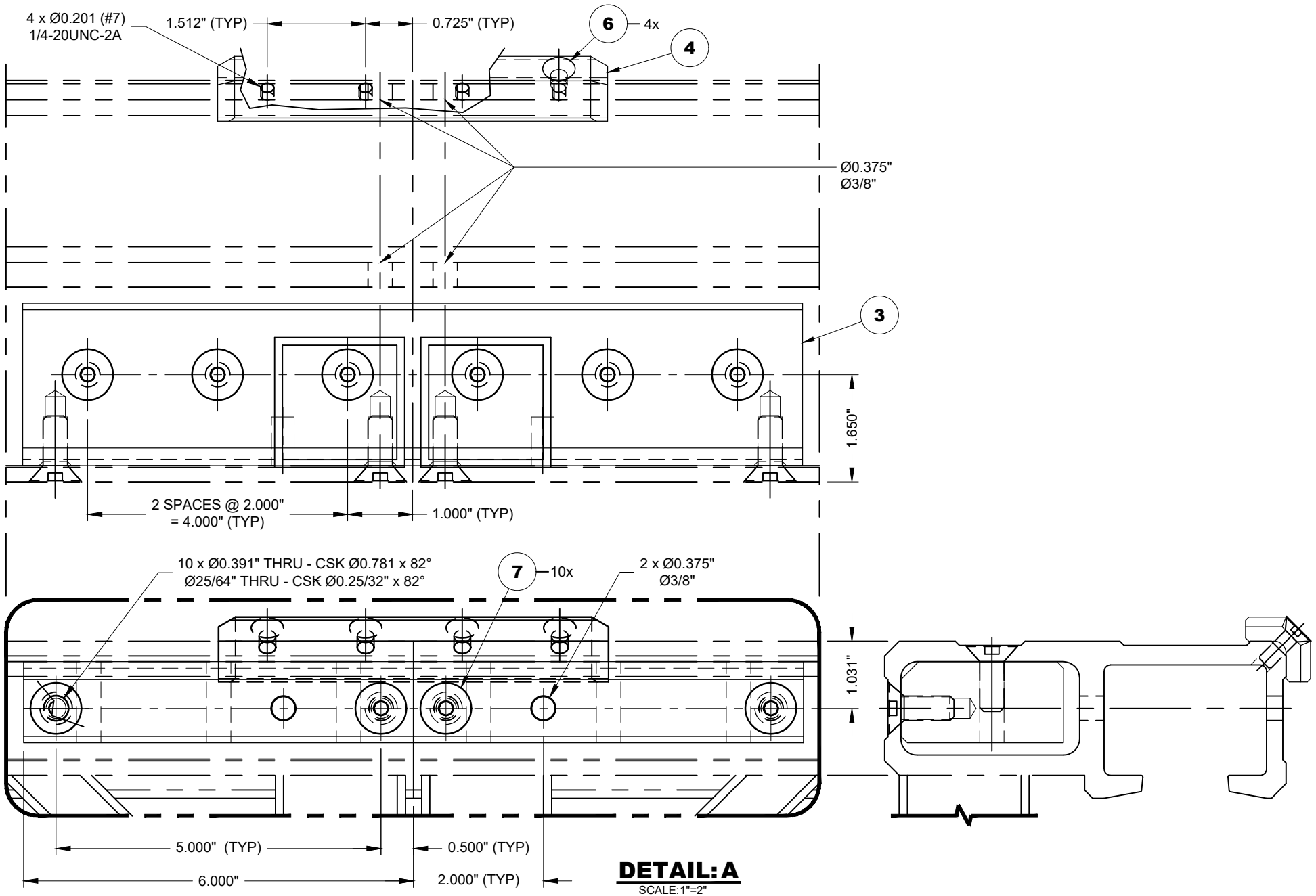
DRAWING NUMBER:  
**GICA-SPLICE-0001**

SHT No:  
**1 OF 3**

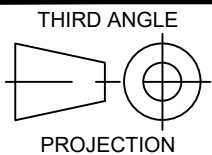
REV:  
**-**

**COUNTERMEASURES**  
SECURITY SOLUTIONS INC.

927 Alloy Drive, Thunder bay  
Ontario P7B 5Z8  
PHONE: 807-623-3352  
WWW.CMSSI.COM



**DETAIL:A**  
SCALE: 1"=2"



TITLE:  
**GATE FRAME SEGMENT SPLICE**

DRAWN BY:  
**P.SCARFO**

INT

CHECKED BY:  
**A.LOCKE**

INT

APPROVED BY:  
**B.SYLVESTER**

INT

DATE:  
**12/FEB/16**

NEXT ASSEMBLY:  
**GICA-INSTL-0001**

SCALE:  
**AS NOTED**

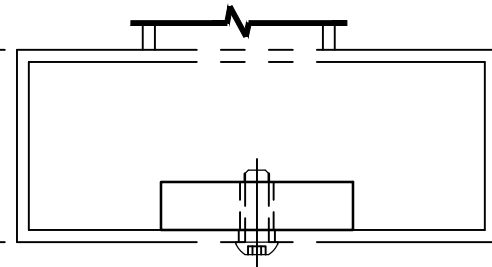
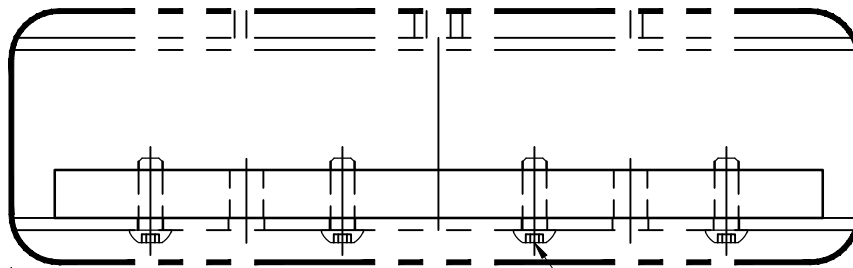
DRAWING NUMBER:  
**GICA-SPLICE-0001**

SHT No:  
**2 OF 3**

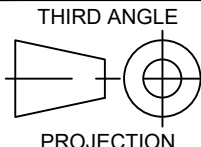
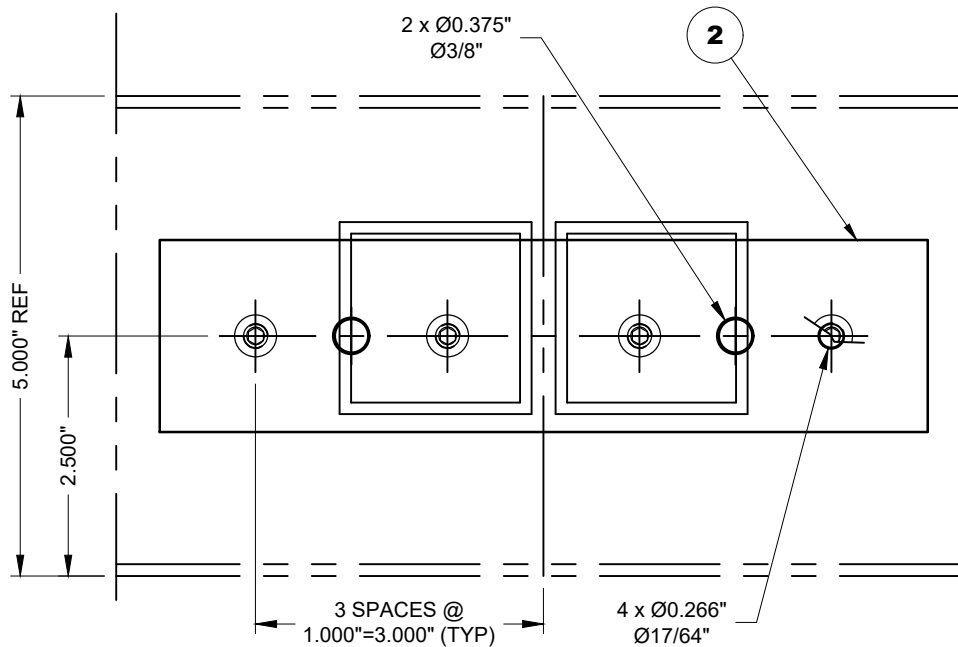
REV:  
**-**

**COUNTERMEASURES**  
SECURITY SOLUTIONS INC.

927 Alloy Drive, Thunder bay  
Ontario P7B 5Z8  
PHONE: 807-623-3352  
WWW.CMSSI.COM



**DETAIL: B**  
SCALE: 1"=2"



TITLE: **GATE FRAME SEGMENT SPLICE**

**COUNTERMEASURES**  
SECURITY SOLUTIONS INC.

927 Alloy Drive, Thunder bay  
Ontario P7B 5Z8  
PHONE: 807-623-3352  
WWW.CMSSI.COM

|                       |     |                        |     |                             |     |                    |  |                    |  |                   |           |
|-----------------------|-----|------------------------|-----|-----------------------------|-----|--------------------|--|--------------------|--|-------------------|-----------|
| DRAWN BY:<br>P.SCARFO | INT | CHECKED BY:<br>A.LOCKE | INT | APPROVED BY:<br>B.SYLVESTER | INT | DATE:<br>12/FEB/16 | NEXT ASSEMBLY:<br><b>GICA-INSTL-0001</b> | SCALE:<br>AS NOTED | DRAWING NUMBER:<br><b>GICA-SPLICE-0001</b> | SHT No:<br>3 OF 3 | REV:<br>- |
|-----------------------|-----|------------------------|-----|-----------------------------|-----|--------------------|--|--------------------|--|-------------------|-----------|